



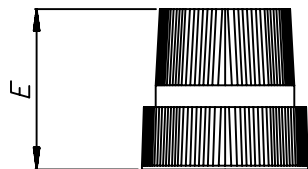
STE PACKAGING DEVELOPMENT



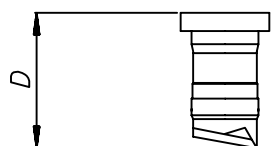
EXTEMPORÁNEO M2C



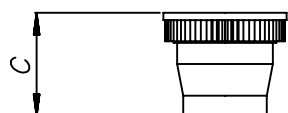
EXTEMPORÁNEO M2C



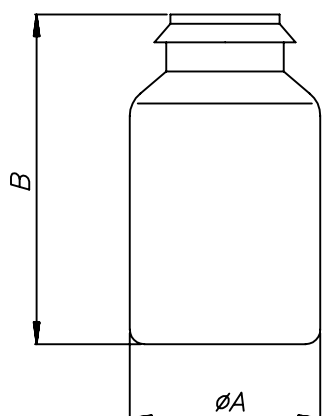
TAPÓN TM2C



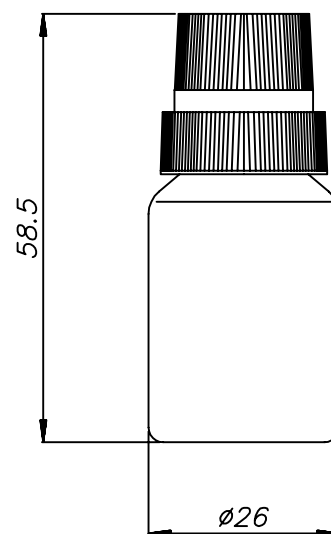
PERCUTOR PM2C



OBTURADOR OM2C



VIAL V15M2C



	CAPACIDAD HASTA EL HOMBRO
V15M2C	15 ml
PM2C	0.6 ml

	COTA (mm)
Ø A	26
B	45
C	14.1
D	18.5
E	21.9

	PESO (gr)	MATERIAL
V15M2C	6.3	PP
OM2C	1.2	PELD
PM2C	2.5	PP
TM2C	2.5	PELD