



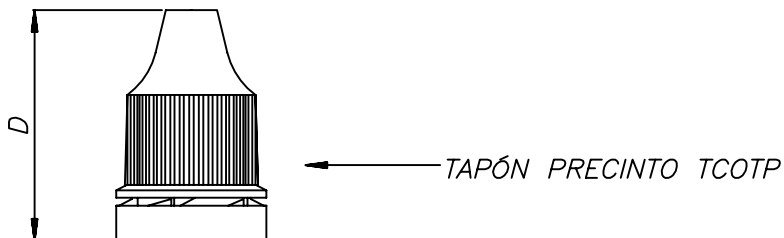
**STE PHARMAPACK**



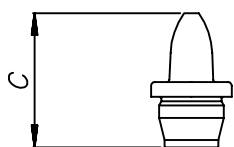
# VIAL COLIRIO 10ml Standard



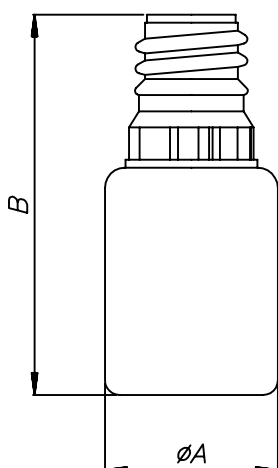
# VIAL COLIRIO 10ml Standard



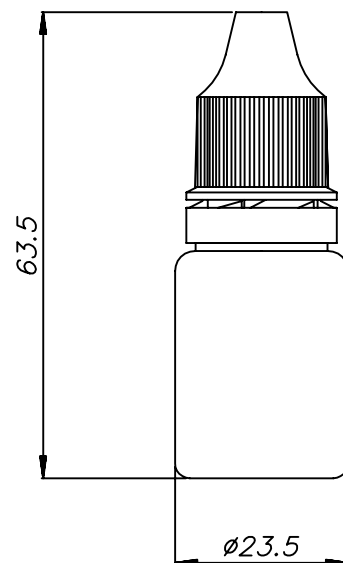
TAPÓN PRECINTO TCOTP



GOTADOR GCOTP  
GOTA CALIBRADA: 33  $\mu$ l $\pm$ 4



VIAL VCOTP 10ml



	CAPACIDAD HASTA EL HOMBRO
VCOTP 10	10.5 ml

	COTA (mm)
$\varnothing A$	23.5
<i>B</i>	50.3
<i>C</i>	17.9
<i>D</i>	31.1

	PESO (gr)	MATERIAL
VCOTP 10	3.5	PELD
GCOTP	0.5	PELD
TCOTP	2.5	PEHD